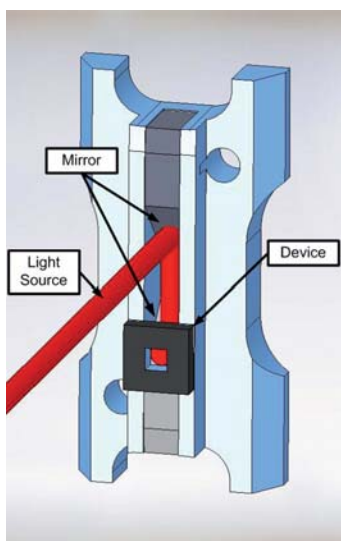
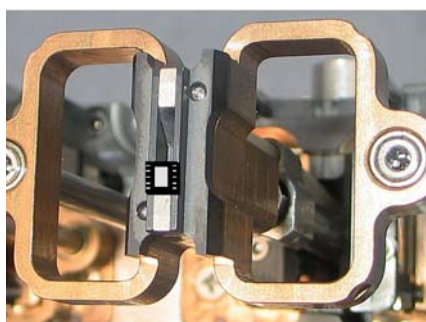


OPTICAL SENSOR DEVICE TEST

- Application examples for optical sensors are mobile phones, cameras, light barriers, PC mouse, medical applications, spectrometers and many others...
- Contactors for optical sensor device test
- Complete solutions for individual customer illumination equipment (see picture back side of the contactor)
- Principle of optical sensor device test:
A light source is directed from the test socket to the plungerhead by mirrors (reflecting prism)



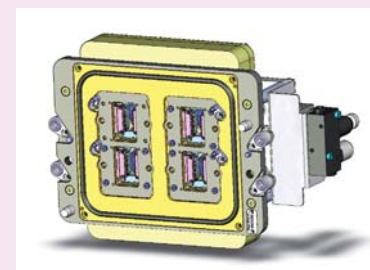
Schematics optical plungerhead with lightsource



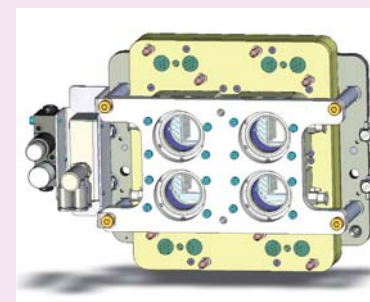
Optical plungerhead with device

MEMS Availability

Realized Applications:	Gravity/Pick&Place	Test-In-Strip
Hall	X	X
GMR	X	
Optical	X	
Pressure	X	X
Acoustic	X	
Gyrometer	(on request)	
Accelerometer	(on request)	



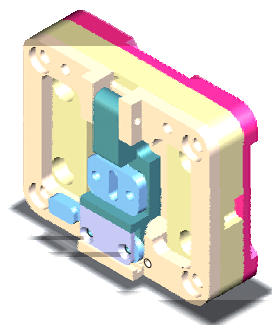
Contactor optical application (front view)



Contactor optical application (back view)

OPTICAL APPLICATIONS FOR RASCO HANDLERS - CUSTOMER BENEFITS

- Optical contactors for Gravity Feed and Pick & Place Handlers with single, dual, quad or octal contact site (depending on handler type; for Pick & Place up to 32 contact sites)
- Smart plunger, contactor technology and highest precision of components guarantee best performance
- Extremely high positioning accuracy of the device via vacuum; extremely high surface accuracy of the mirrors (0.0006 mm)
- Standard conversion kit can be used with adding only 2 prisms, a new plunger head and a new test socket
- Manual Actuator available
- Temperature range -60°C up to +160°C
- All optical applications are available on a standard Rasco tri-temp base system, a standard conversion kit and the specific MEMS configuration



Manual Actuator for optical contactor

SALES & SERVICE

For more information please ask your local Rasco sales or service team or contact sales@rasco.de or service@rasco.de