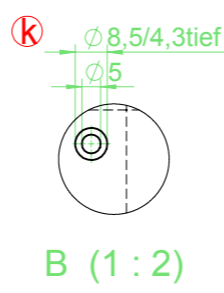


ESMO (INFINEON)
Intest Docking (Intersil)

Pos. -tol für Gewinde, Bohrungen, Senkungen $\oplus 0.1$ e

- 1) = M4
- 2) = M5
- 3) = M6
- 4) = DIN74 Am4
- 5) = Senkung ϕ 8,5/4,3 tief, Bohrung ϕ 5
- 6) = ϕ 5,1 \pm 0.05
- 7) = UNC 1/4-20
- 8) = ϕ 4,768 \pm 0,0254



Index	State	Date	Name	Index	State	Date	Name	Index	State	Date	Name	Index	State	Date	Name
a	chromatieren	21.02.05	maw	e	Pos.toleranz war 0,3	17.05.05	ami	i	Material hinzu	11.06.07	pae				
b	(24x)M5/ (6x)Ø5,1 hinzu	21.02.05	maw	f	hinzu: 4xM5 / 2xØ5,1	04.07.05	ami	j	2x UNC 1/4-20Ø4,768 neu	19.02.08	ark				
c	war 490mm	21.02.05	maw	g	2x Ø5,1mm hinzu	20.12.05	maw	k	war DIN74 Km4	23.10.08	stp				
d	Bohrbild modifiziert	17.05.05	ami	h	4x M5 hinzu	27.02.07	flm								

Scale	1:3.5	Maße inkl. OF	Worked	01.09.04	maw	06.8100.0026
Tolerances	DIN ISO 2768-mH		Checked			
Material	AlCuMg1		Rasco		Docking Plate	
Raw material	PI.8					
Face	chromatiert/Vernickelt (Matt)		Sheet	Blatt1 / 1		Similar to

Company confidential!
 This drawing and the information herein is the property of RASCO and is to be used in strict confidence. This drawing shall not be reproduced, copied or given to any third party without express written permission from RASCO.